

## Support good deeds around every corner through the Jewish Federation.

**SIGN UP.** Stay updated on relevant news, events, and needs at the Jewish Federation by signing up for our newsletter.

**ATTEND AN EVENT.** There is always something going on. Check our online calendar.

**JOIN A COMMITTEE.** Meet other engaged people like yourself who are committed to bettering their Jewish community and celebrating Jewish culture.

**SPEAK OUT.** The best way to spread the word about the Jewish Federation is one-on-one. Tell your friends, colleagues and family about us.

**VOLUNTEER.** We offer many ways to get involved in your community. Contact us about volunteer opportunities.

**SPONSOR AN EVENT.** There are many ways to help a good cause while getting in front of people who care. Contact us about sponsorship opportunities.

**DONATE.** Contribute to your community and support Jewish continuity through the Jewish Federation. Your generosity addresses the greatest needs of our community. Donate online today.

[www.JewishMiddlesex.org](http://www.JewishMiddlesex.org)  
info@jf-gmc.org

## We give direction to your best intentions.

### CARING FOR JEWS IN NEED

- Helping individuals and families at risk
- Alleviating hunger and the effects of poverty
- Supporting the needs of seniors and Holocaust survivors

### ENGAGING IN OUR COMMUNITY

- Promoting social justice and good deeds
- Uniting people through community events
- Developing leaders and promoting volunteerism
- Convening stakeholders to plan for our community's future
- Fostering innovation and collaboration between community organizations
- Advocating for Israel and Jewish interests
- Creating philanthropic opportunities for all generations

### INSPIRING THE NEXT GENERATION

- Supporting day schools and after-school religious programs
- Funding Jewish learning for all ages
- Educating people about Israel
- Providing Jewish books and music to families through PJ Library®
- Awarding scholarships for Jewish summer camps
- Promoting youth trips to Israel through Birthright Israel

## You'll find us where the priorities of Jews throughout the area intersect.

The Jewish Federation of Greater Middlesex County identifies and funds social service, educational and humanitarian needs locally, in Israel and around the world. Through the network of agencies and programs we fund, the Federation helps alleviate poverty, provides emergency relief, ensures a Jewish future, and supports the community. The good we do is something everyone in Middlesex County can share in.

### SHARED VALUES

- Raising our children in a Jewish way
- Ensuring our traditions continue
- Doing good deeds for the world (mitzvot)
- Living righteously and respecting others

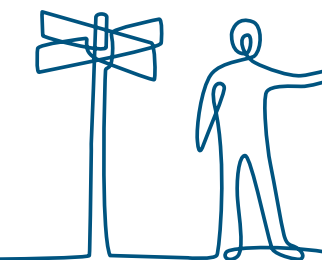
### SHARED INTERESTS

- Living rich and rewarding lives
- Protecting our vulnerable
- Supporting a strong Israel

### SHARED EXPERIENCES

- Honoring the Torah, the story of the Jews
- Growing up in synagogues
- Attending Jewish School
- Valuing Jewish cultural experiences
- Being both American and Jewish
- Embracing Israel as our homeland

BROCHURE PRODUCED BY : RED ROOSTER GROUP.COM



## Why should I support the Jewish Federation of Greater Middlesex County?

**MISSION:** The Jewish Federation of Greater Middlesex County brings together the people, partners and resources to fulfill the most important needs and aspirations of our community. We care for the vulnerable locally and worldwide, forge strong connections with Israel, attract people to a more vibrant community, and inspire the next generation to embrace Jewish life.



230 Old Bridge Turnpike  
South River, NJ 08882  
732.588.1800 • info@jf-gmc.org  
www.JewishMiddlesex.org



# For the good you can see around every corner.

Everywhere you look, the Jewish Federation of Greater Middlesex County is bringing together the people, partners, and resources to fulfill the most important needs and aspirations of our community. We care for the vulnerable locally and worldwide, forge strong connections with Israel, attract people to a more vibrant community, and inspire the next generation to embrace Jewish life. We accomplish what other organizations simply cannot by themselves. The more you know, the more the story unfolds. See how your support makes a difference around every corner.



© 2006 Jonathan Levine/JFNA.

**IMPACT** Leaving no child behind, we initiated a workshop to train Hebrew school teachers in educational methods that help children with different learning styles.

## JEWISH LEARNING

The Jewish Federation of Greater Middlesex County is committed to providing quality Jewish educational experiences to all, especially our youth. We fund day and religious schools, teen trips to Israel, Jewish summer camps, and other educational programs.

## JEWISH CAMPING

We support Jewish camping as a highly effective way of strengthening Jewish identity, building community, and creating lasting friendships for area children.

**IMPACT** Each year, dozens of children in our community go to camp with Federation support. They include many first-time campers, and children with special needs.



## STUDENT LIFE

The Jewish Federation supports and fosters Jewish community on campus through Rutgers Hillel.

**IMPACT** We provide 250 weekly Shabbat meals for Rutgers students, providing a home away from home at Rutgers Hillel.



© 2010 Ross Taylor/JFNA.

## SOCIAL SERVICES

We fund and partner with Jewish social service agencies to provide help for families, kids, seniors and individuals in need.

**IMPACT** By organizing a community effort to provide vocational training, and day care scholarships, as well as replenishing kosher food pantries, we are here to help. Our critical involvement continues each year.

## JEWISH HOME LIFE

We invest in programs that teach Jewish traditions to kids and help foster and develop their Jewish identity throughout life.

**IMPACT** Every month, our PJ Library® program sends free, high-quality Jewish books and music to over 500 young families.



© 2009 Bernie Saul/JFNA.

## LEADERSHIP DEVELOPMENT

We are developing new generations of leaders among our Jewish community through community service and political awareness.

**IMPACT** We launched the Tanzman Fellows Leadership program to rave reviews and continue to sponsor voters' forums to spotlight issues of importance to Jewish voters.



## COMMUNITY EVENTS

We strengthen our Jewish community in every corner and every age group through programs and special events that bring diverse groups together and address community needs.

**IMPACT** Our annual Holocaust Commemoration Program, Israel celebrations and advocacy and educational forums build positive relations within the Jewish community and with the general Middlesex community.



© 2003 Lloyd Wolf/JFNA.

## YOUTH TRIPS ISRAEL

We believe that there is no better way of creating ties to Israel than having a first-hand experience there.

**IMPACT** Over the past few years, nearly 1,000 teens and young adults have traveled to Israel on subsidized teen programs and on Birthright Israel programs we support.

## SUPPORTING ISRAEL

We are dedicated to assisting Jews in Israel and developing ties between future generations and the homeland of the Jewish people.

**IMPACT** We maximize resources for children and youth in disadvantaged communities like Ashkelon and link organizations that can do the greatest good.



© 2005 Jonathan Levine/JFNA.

## HELPING AROUND THE WORLD

We partner with the Jewish Agency for Israel (JAFI) and the American Jewish Distribution Committee (JDC), to provide support and aid to Jews and non-Jews in need around the world.

**IMPACT** When an earthquake rocked Haiti, our network was on the ground, providing food, clean water, shelter repair and medical care to hundreds of thousands of people. When an emergency strikes, we are ready to help.

